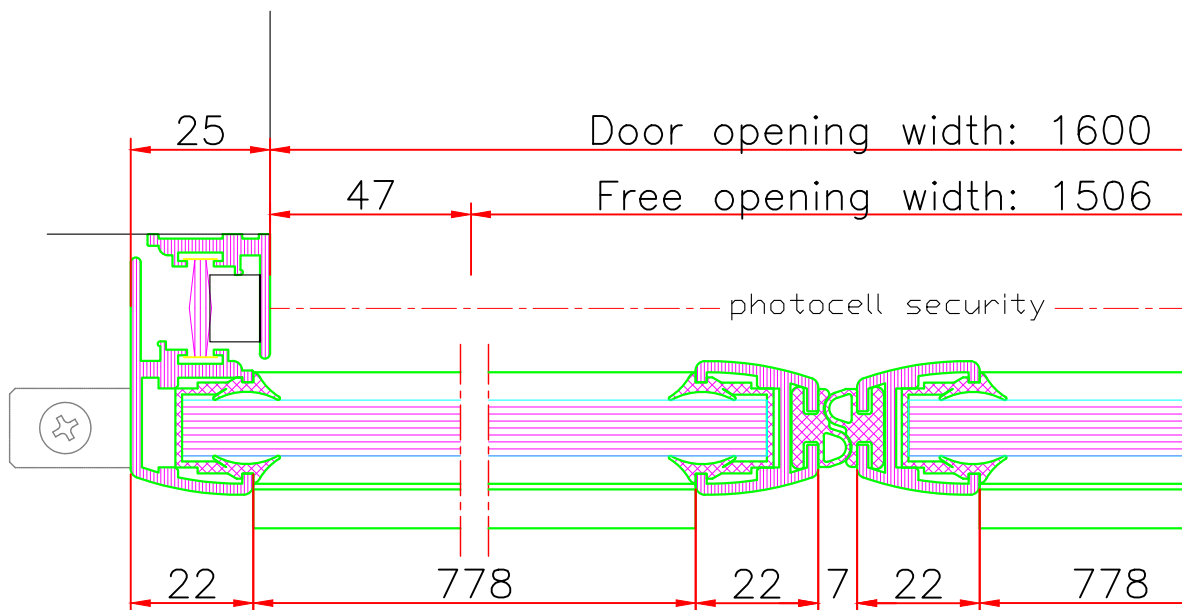
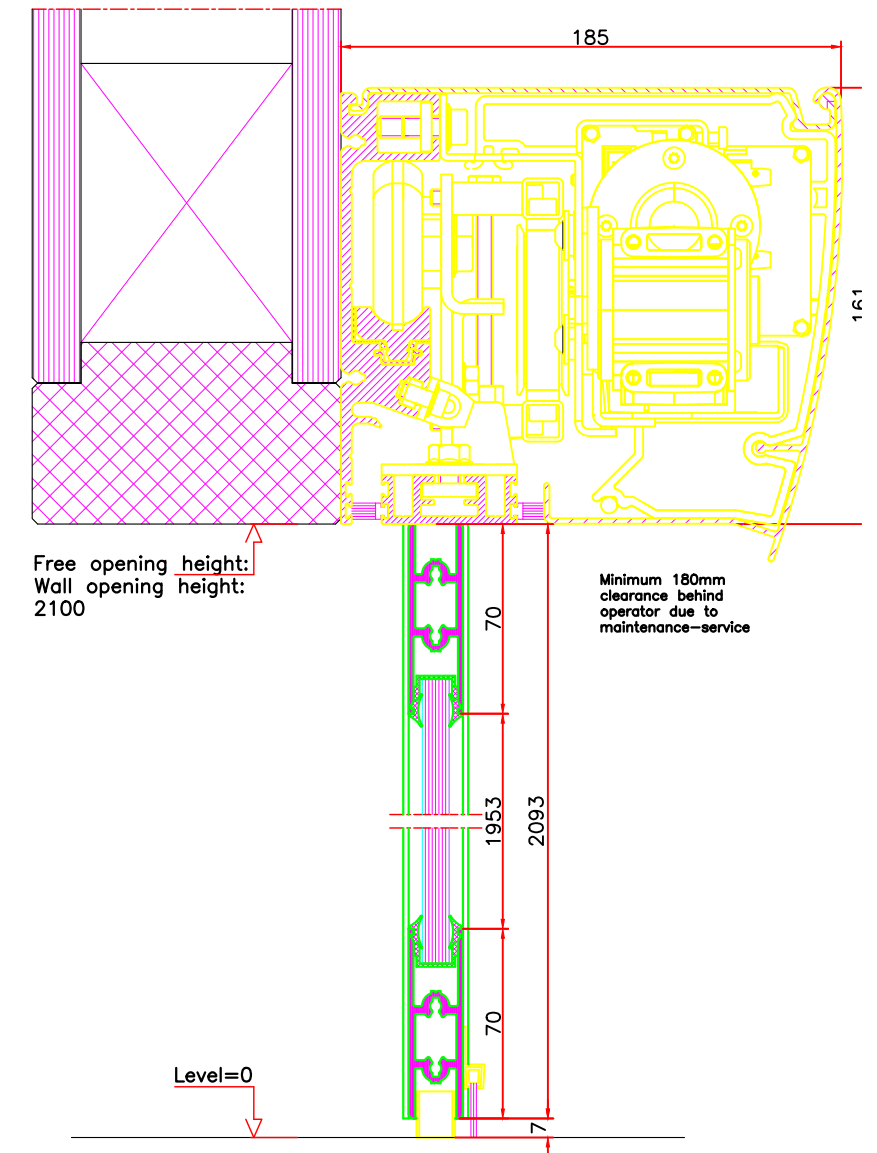
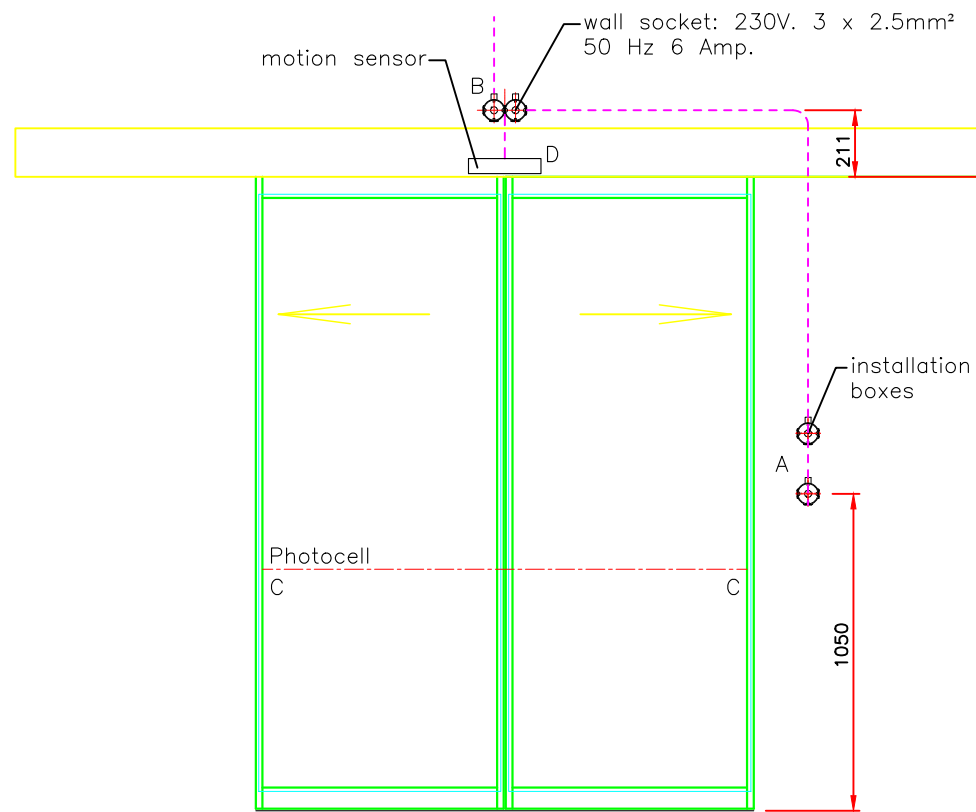
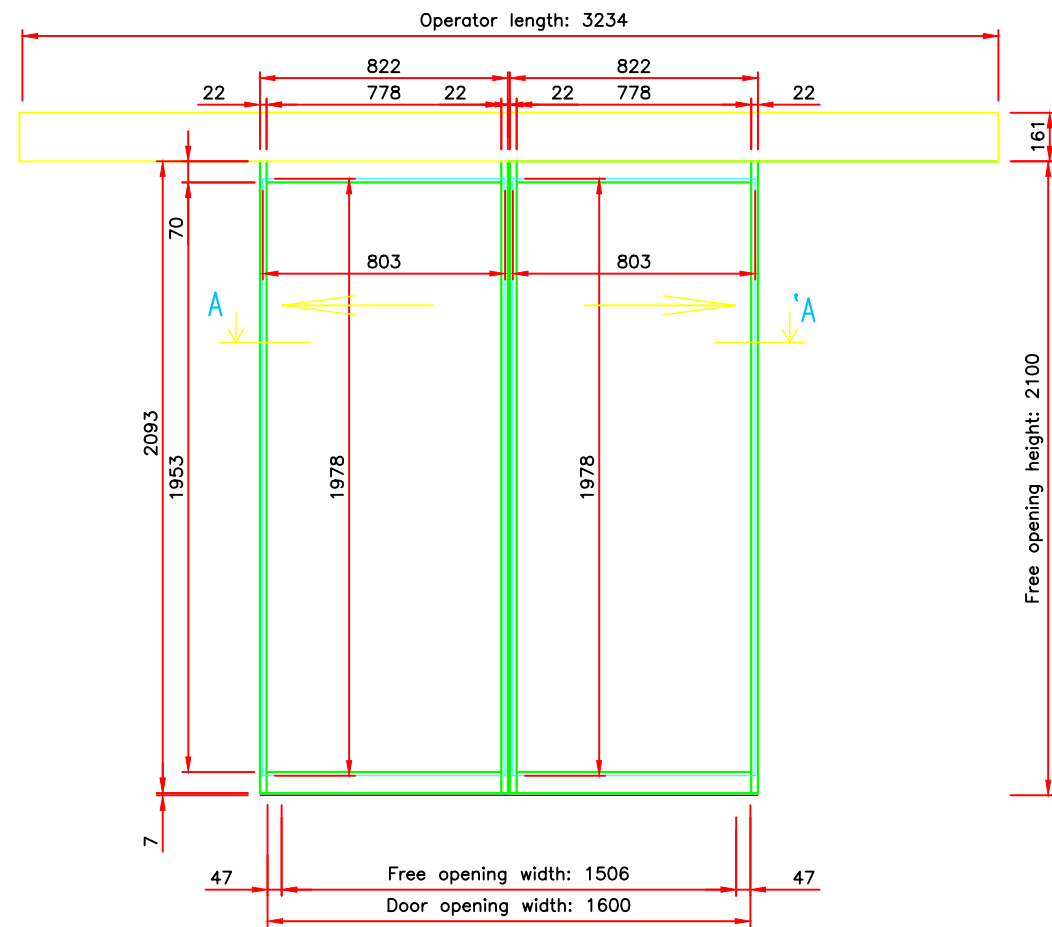


SECTION A'A



implementable signaling devices		
position	device	symbol
A	push button, 4 x 0.34mm ²	
A	domed push button, 4 x 0.34mm ²	
A	push button 2-positions, 4 x 0.34mm ²	
A	key switch, 4 x 0.34mm ²	
A	pull switch, 4 x 0.34mm ²	
A	elbow push switch, 4 x 0.34mm ²	
A	PGS wired UTP Cat5, 8 wires Ø0,5mm	
B	wall socket: 230V, 3 x 2.5mm ²	
C	photocell incl. cable	
D	motion sensor incl. cable	

other implementable electrical devices	
INPUT:	- intercom
	- fire alarm system
	potential free contact switch
OUTPUT:	- bel switch
	- alarm system
	Imax. = 400mA

Glass measurements in m		
	WIDTH	HEIGHT
LEFT DOORWING	803	1978
RIGHT DOORWING	803	1978

Title: W20S_KONE SD_D		Copyright by Kone
Ordernumber:	Page no:06	Projection ISO-128
Date:	Scale: --	A
Drawn by:	Paper size: A3	REV.NO.:
		A: --
		B: --
Accustraat 21 Postbus 94 3900 AB Veenendaal tel. : 0318 - 532333 fax : 0318 - 532339		C: --